





VALVOLA A SFERA PER ACQUA PASSAGGIO TOTALE - SERIE NILO[®]


CT2959.0_00
ITA
Luglio 2016

GAMMA DI PRODUZIONE


ATTACCHI FF


	Codice	2959.03.90	2959.04.90	2959.05.90	2959.06.90	2959.07.90	2959.08.90	2959.09.90
	Taglia	3/8"	1/2"	3/4"	1"	1 1/4"	1 1/2"	2"
	PN [bar]	50	40			30	25	


	Codice	2959.03.00	2959.04.00	2959.05.00	2959.06.00	2959.07.00	2959.08.00	2959.09.00
	Taglia	3/8"	1/2"	3/4"	1"	1 1/4"	1 1/2"	2"
	PN [bar]	50	40			30	25	

	Codice	2959.03.70		2959.04.70	2959.05.70		2959.06.70	2959.07.70
	Taglia	3/8"		1/2"	3/4"		1"	1 1/4"
	PN [bar]	50		40			30	


ATTACCHI MF

	Codice	2960.03.90	2960.04.90	2960.05.90	2960.06.90	2960.07.90	2960.08.90	2960.09.90
	Taglia	3/8"	1/2"	3/4"	1"	1 1/4"	1 1/2"	2"
	PN [bar]	50	40			30	25	

	Codice	2960.03.00	2960.04.00	2960.05.00	2960.06.00	2960.07.00	2960.08.00	2960.09.00
	Taglia	3/8"	1/2"	3/4"	1"	1 1/4"	1 1/2"	2"
	PN [bar]	50	40			30	25	

	Codice	2960.03.70		2960.04.70	2960.05.70		2960.06.70	2960.07.70
	Taglia	3/8"		1/2"	3/4"		1"	1 1/4"
	PN [bar]	50		40			30	

ATTACCO F CON BOCCHETTONE M

	Codice	3346.04.70		3346.05.70	3346.06.70		3346.07.70
	Taglia	1/2" x 1/2"		3/4" x 3/4"	1" x 1"		1 1/4" x 1 1/4"
	PN [bar]	40			30		

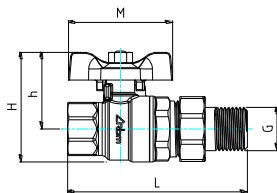
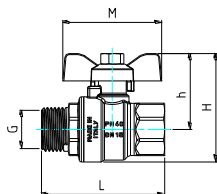
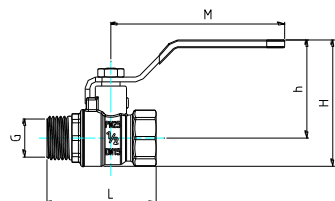
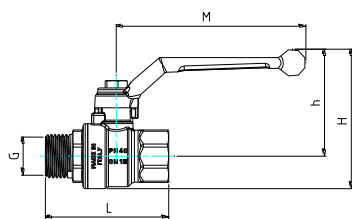
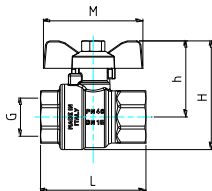
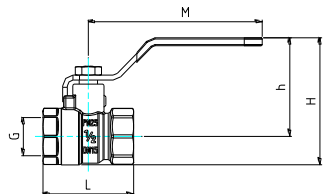
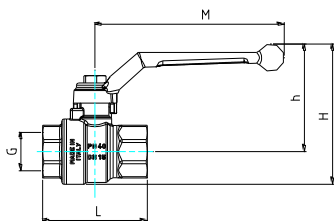
CARATTERISTICHE COSTRUTTIVE

Corpo	: Ottone nichelato	Asta	: Ottone
Sfera	: Ottone, diamantata e cromata	Guida asta	: PTFE
Sedi	: PTFE	Anello asta	: Ottone
O-ring	: NBR e FKM (viton)	Leva	: Alluminio/acciaio verniciato color Nera
Cappelletto	: Ottone nichelato	Farfalla	: Alluminio verniciato color Nera
Connessioni filettate	: ISO 7 (UNI EN 10226)	Passaggio	: Totale

CARATTERISTICHE TECNICHE

Temp. impiego : -20 ÷ +120°C (in assenza di vapore) Fluido di impiego : Acqua e acqua + glicole
 P_{max} utilizzo : rif. a quanto riportato in tabella

CARATTERISTICHE DIMENSIONALI



Codice	Misura G	L [mm]	h [mm]	H [mm]	M [mm]	Kv (m ³ /h)
2959.03.90	3/8"	45,5	46,9	58,4	92,0	-
2959.04.90	1/2"	57,0	50,5	66,0	92,0	15,70
2959.05.90	3/4"	64,0	59,0	77,5	117,0	26,11
2959.06.90	1"	78,0	62,4	85,6	117,0	50,87
2959.07.90	1 1/4"	92,3	67,0	95,5	117,0	72,14
2959.08.90	1 1/2"	102,0	91,8	126,9	176,0	116,77
2959.09.90	2"	126,0	99,8	142,8	176,0	220,00

2959.03.00	3/8"	45,5	42,9	54,4	84,4	-
2959.04.00	1/2"	57,0	48,1	63,6	84,4	15,70
2959.05.00	3/4"	64,0	59,3	77,8	102,2	26,11
2959.06.00	1"	78,0	62,3	85,5	102,2	50,87
2959.07.00	1 1/4"	92,3	66,9	95,4	102,2	72,14
2959.08.00	1 1/2"	102,0	84,5	119,5	152,4	116,77
2959.09.00	2"	126,0	92,5	135,5	152,4	220,00

2959.03.70	3/8"	45,5	30,9	42,4	50,0	-
2959.04.70	1/2"	57,0	36,1	51,6	50,0	15,70
2959.05.70	3/4"	64,0	44,6	63,1	62,0	26,11
2959.06.70	1"	78,0	47,1	70,3	70,0	50,87
2959.07.70	1 1/4"	92,3	51,8	80,3	70,0	72,14

2960.03.90	3/8"	57,5	46,9	58,4	92,0	-
2960.04.90	1/2"	68,0	50,5	66,0	92,0	15,70
2960.05.90	3/4"	78,0	59,0	77,5	117,0	26,11
2960.06.90	1"	90,0	62,4	85,6	117,0	50,87
2960.07.90	1 1/4"	102,7	67,0	95,5	117,0	72,14
2960.08.90	1 1/2"	114,7	91,8	126,9	176,0	116,77
2960.09.90	2"	139,0	99,8	142,8	176,0	220,00

2960.03.00	3/8"	57,5	42,9	54,4	84,4	-
2960.04.00	1/2"	68,0	48,1	63,6	84,4	15,70
2960.05.00	3/4"	78,0	59,3	77,8	102,2	26,11
2960.06.00	1"	90,0	62,3	85,5	102,2	50,87
2960.07.00	1 1/4"	102,7	66,9	95,4	102,2	72,14
2960.08.00	1 1/2"	114,7	84,5	119,5	152,4	116,77
2960.09.00	2"	139,0	92,5	135,5	152,4	220,00

2960.03.70	3/8"	57,5	30,9	42,4	50,0	-
2960.04.70	1/2"	68,0	36,1	51,6	50,0	15,70
2960.05.70	3/4"	78,0	44,6	63,1	62,0	26,11
2960.06.70	1"	90,0	47,1	70,3	70,0	50,87
2960.07.70	1 1/4"	102,7	51,8	80,3	70,0	72,14

3346.04.70	1/2"	89,5	36,1	51,6	50,0	-
3346.05.70	3/4"	100,5	42,1	60,6	62,0	-
3346.06.70	1"	115,2	45,0	68,5	62,0	-
3346.07.70	1 1/4"	133,0	51,0	80,2	70,0	-



RBM spa si riserva il diritto di apportare miglioramenti e modifiche ai prodotti descritti ed ai relativi dati tecnici in qualsiasi momento e senza preavviso: riferirsi sempre alle istruzioni allegate ai componenti forniti, la presente scheda è un ausilio qualora esse risultino troppo schematiche. Per qualsiasi dubbio, problema o chiarimento, il nostro ufficio tecnico è sempre a disposizione.



RBM Spa
 Via S. Giuseppe, 1
 25075 Nave (Brescia) Italy
 Tel. 030-2537211 Fax 030-2531798
 E-mail: info@rbm.eu - www.rbm.eu